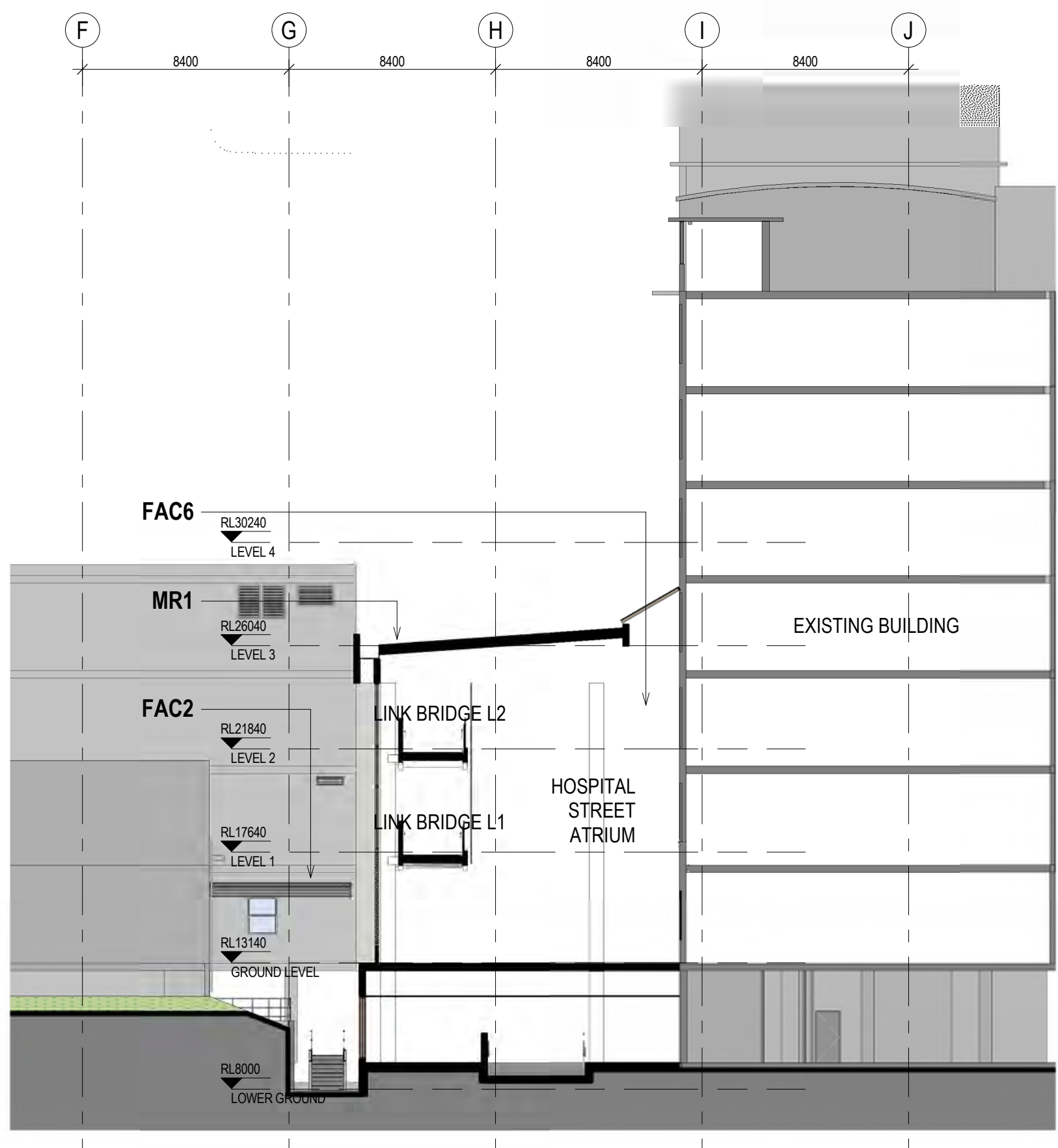
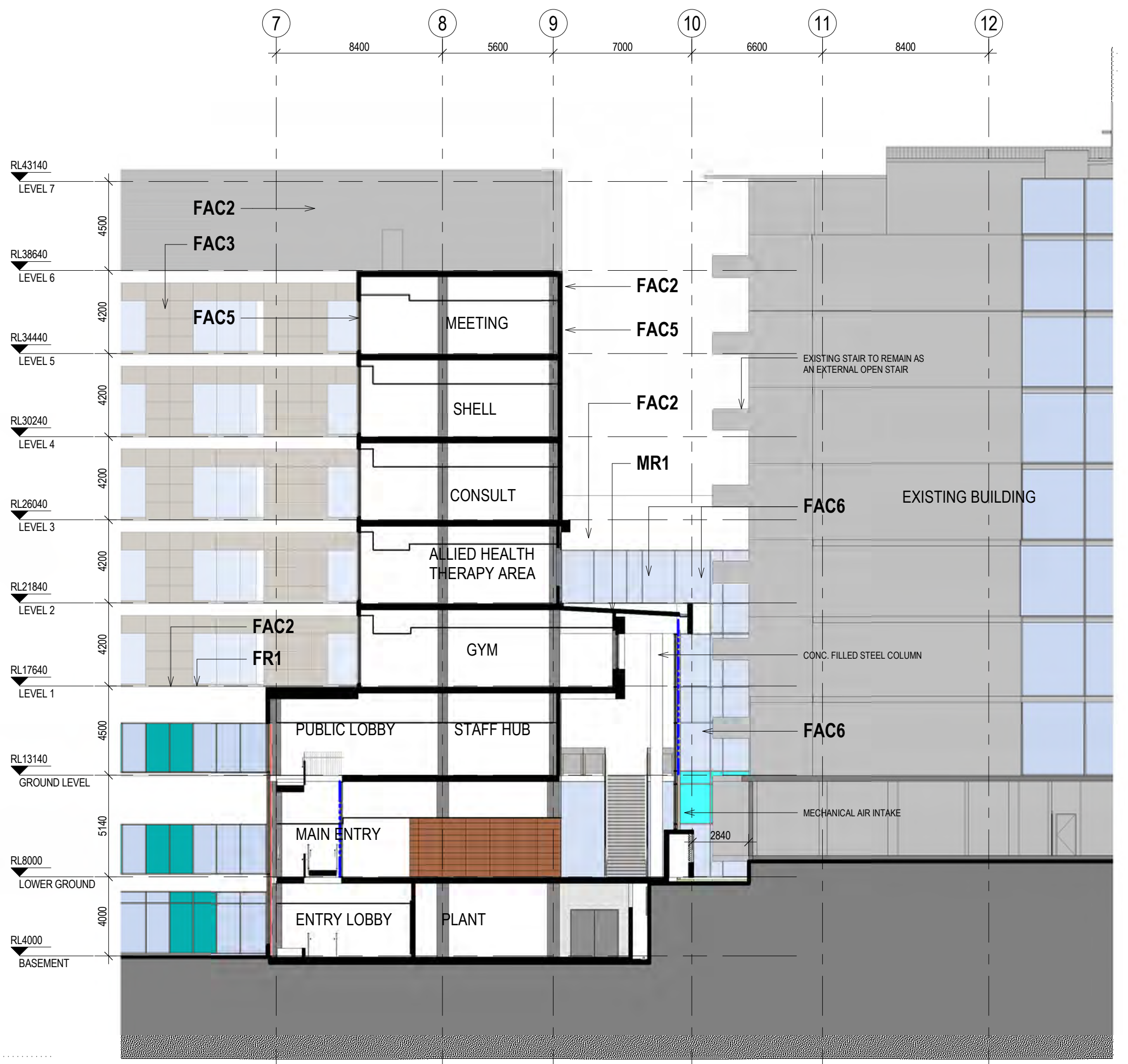


1 SE_1 - Atrium
15G1 1:200



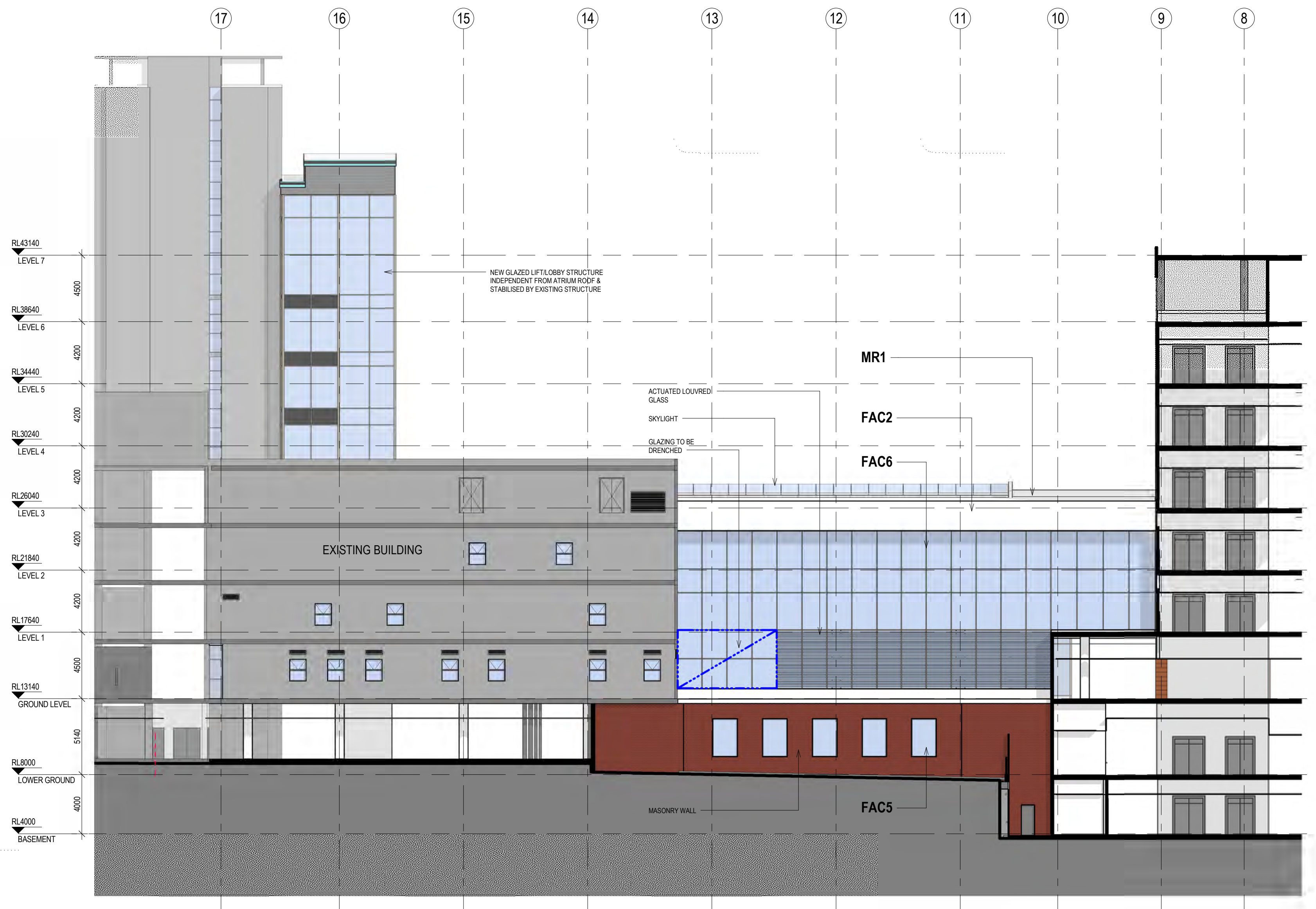
2 SE_2 - Atrium
15B2 1:200



3 SE_6 - Atrium
15B2 1:200



4 SE_7 - Atrium
15B2 1:200



5 SE_8 - Atrium
15B2 1:200

NOTES:
TO BE READ IN CONJUNCTION WITH SERVICES, STRUCTURAL & CIVIL DOCUMENTATION. ANY DISCREPANCY TO BE BROUGHT TO THE ATTENTION OF JACOBS.

- ELEVATION LEGEND:**
- FAC1 TERRACOTTA CLADDING
 - FAC2 ACRYLIC RENDER FACADE SYSTEM (STO)
 - FAC3 ALUMINIUM NON-COMPOSITE CLADDING
 - FAC5 FRAMED GLAZING (WHITE / TURQUOISE / GREY DENOTES COLOURBACK PANEL)
 - FAC6 CURTAIN WALL GLAZING, EXTRUDED ALUMINIUM FRAME (WHITE DENOTES COLOURBACK PANEL)
 - FAC7 CURTAIN WALL (CURVED TRANSOMS + GLAZING) VERTICALS: SILICONE/UNCAPPED HORIZONTALS: CAPPED
 - FAC8 FIXED GLASS BALUSTRADE SCREEN WITH HIGH LEVEL CLEAR GLASS OPERABLE LOUVRES
 - FAC9 FRAMELESS FIXED GLAZING
 - FAC10 METAL SHEET CLADDING (COLORBOND)
 - FR1 FLAT ROOF, MEMBRANE WITH SELECT PAVERS/BALUST
 - MR1 METAL ROOF SHEETING WITH 100mm INSULATION ROOF RAISERS
 - LVR1 HORIZONTAL LOUVRES

REV	DATE	BY	CHKD	APPD	AMENDMENT
6	13.07.18	BY	WB		ISSUED FOR COORDINATION
5	22.06.18	BY	WB		MAIN WORKS 70% DD ISSUE
4	12.04.18	BY	WB		ISSUED FOR SSQA
3	29.03.18	MW/EF	WB		SCHEMATIC DESIGN ISSUE
2	16.03.18	MW	WB		SCHEMATIC DESIGN DRAFT ISSUE
1	23.02.18	MW/MR	WB		MAIN WORK 70% SD ISSUE

KEY PLAN



LEVEL 7, 177 PACIFIC HIGHWAY
NORTH STONEY
NSW 2139
AUSTRALIA

TEL: +61 2 9628 2100
FAX: +61 2 9628 2210
WEB: jacobsc.com

PROJECT
CONCORD HOSPITAL REDEVELOPMENT STAGE 1

HOSPITAL ROAD
CONCORD NSW 2139

TITLE
SECTION SHEET 3

DRAWING STATUS
DESIGN DEVELOPMENT

APPROVED	DATE	REVIEWED	DATE

SCALE
1:200

PROJECT No. IA064700 DRAWING No. NEWB-AR-DRG-7103 REV 6