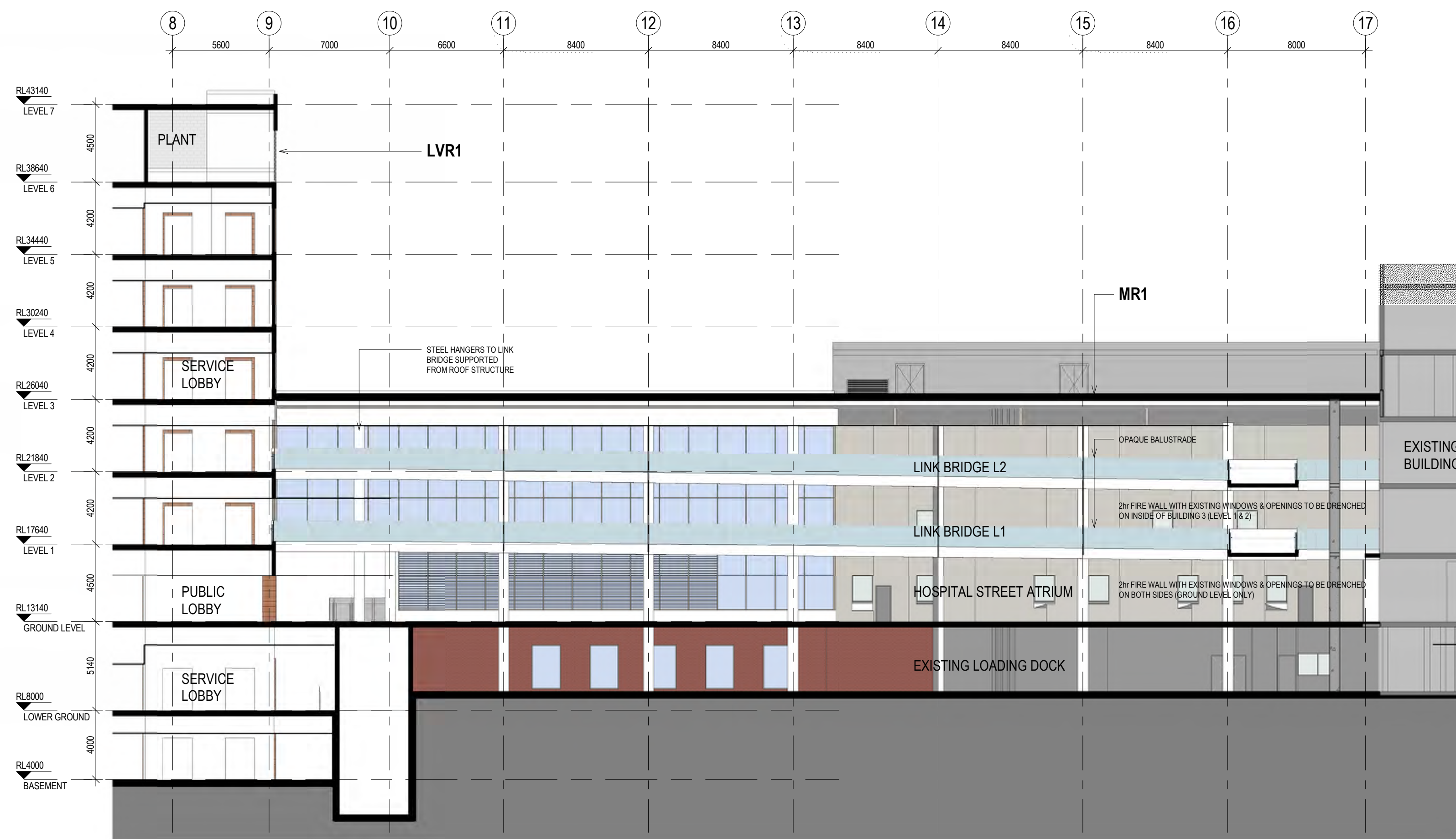


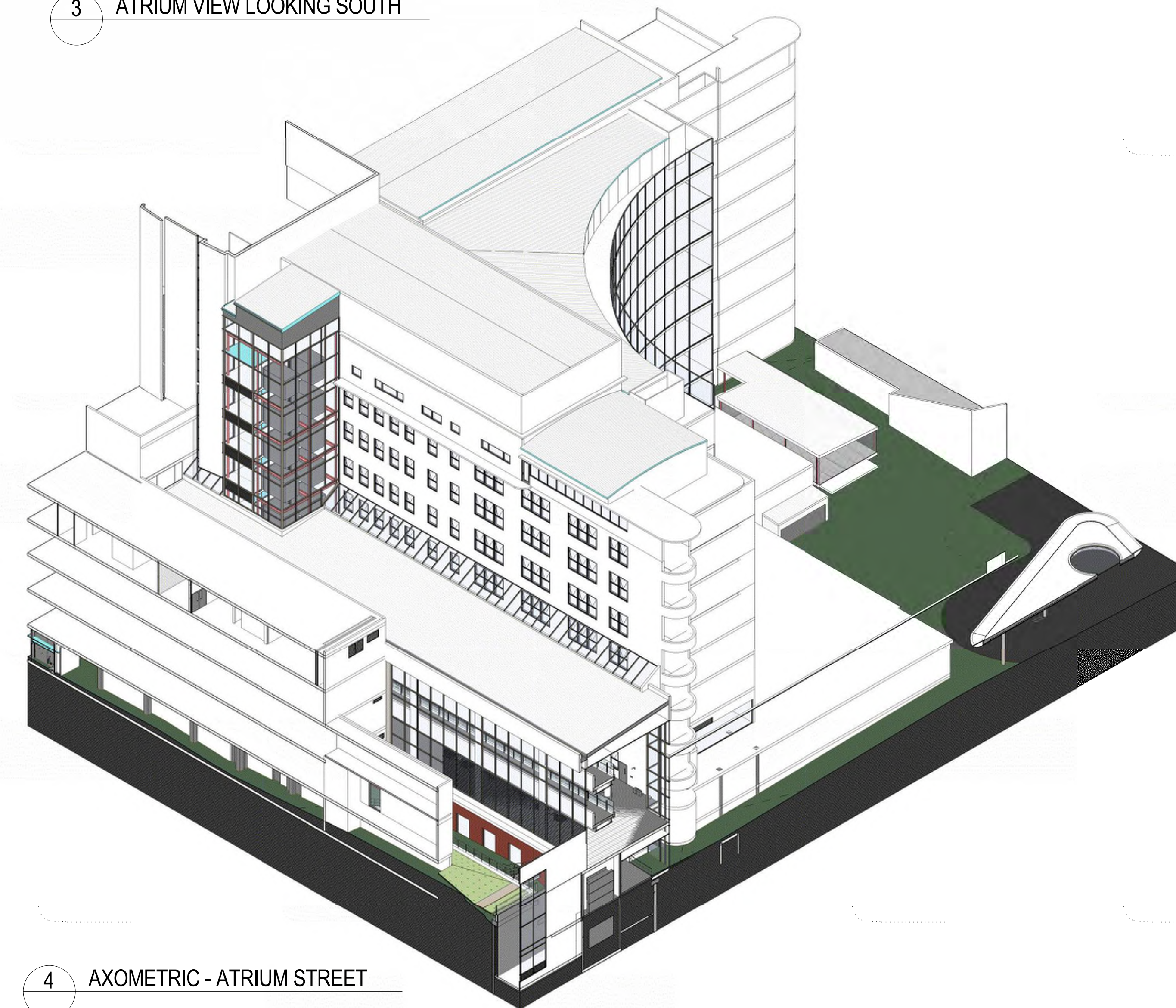
1 SE_5 - Atrium
15B2 1:200



2 SE_4 - Atrium
15B2 1:200



3 ATRIUM VIEW LOOKING SOUTH



4 AXOMETRIC - ATRIUM STREET

NOTES:
TO BE READ IN CONJUNCTION WITH SERVICES, STRUCTURAL & CIVIL DOCUMENTATION. ANY DISCREPANCY TO BE BROUGHT TO THE ATTENTION OF JACOBS.

ELEVATION LEGEND:

- FAC1 TERRACOTTA CLADDING
- FAC2 ACRYLIC RENDER FACADE SYSTEM (STO)
- FAC3 ALUMINIUM NON-COMPOSITE CLADDING
- FAC5 FRAMED GLAZING (WHITE / TURQUOISE / GREY DENOTES COLOURBACK PANEL)
- FAC6 CURTAIN WALL GLAZING, EXTRUDED ALUMINIUM FRAME (WHITE DENOTES COLOURBACK PANEL)
- FAC7 CURTAIN WALL (CURVED TRANSOMS + GLAZING) VERTICALS: SILICONE/UNCAPPED HORIZONTALS: CAPPED
- FAC8 FIXED GLASS BALUSTRADE SCREEN WITH HIGH LEVEL CLEAR GLASS OPERABLE LOUVRES
- FAC9 FRAMELESS FIXED GLAZING
- FAC10 METAL SHEET CLADDING (COLORBOND)
- FR1 FLAT ROOF, MEMBRANE WITH SELECT PAVERS/BALLAST
- MR1 METAL ROOF SHEETING WITH 100mm INSULATION ROOF RAISERS
- LVR1 HORIZONTAL LOUVRES

REV	DATE	BY	CHKD	APPD	AMENDMENT
6	13.07.18	BY	WB		ISSUED FOR COORDINATION
5	22.06.18	BY	WB		MAIN WORKS 70% DD ISSUE
4	12.04.18	BY	WB		ISSUED FOR SSQA
3	29.03.18	MW/EF	WB		SCHEMATIC DESIGN ISSUE
2	16.03.18	MW	WB		SCHEMATIC DESIGN DRAFT ISSUE
1	23.02.18	MW/MR	WB		MAIN WORK 70% SD ISSUE

KEY PLAN	DATE	BY	CHKD	APPD	AMENDMENT



LEVEL 7, 177 PACIFIC HIGHWAY
NORTH SYDNEY
NEW SOUTH WALES
AUSTRALIA

TEL: +61 2 9528 2100
FAX: +61 2 9528 2010
WEB: jacobsc.com

PROJECT
**CONCORD HOSPITAL
REDEVELOPMENT STAGE 1**

HOSPITAL ROAD
CONCORD NSW 2139

TITLE
SECTION SHEET 4

DRAWING STATUS	
DESIGN DEVELOPMENT	
DRAWN MW/BY	DRAWING CHECK PC/WB
DESIGNED AC/DG	DESIGN REVIEW CY
REVIEWED	DATE
APPROVED	DATE
SCALE 1:200	
PROJECT NO. IA064700	DRAWING NO. NEWB-AR-DRG-7104
REV	6