

Burudyara Concord Forensic Mental Health Unit

Forensic mental health consumers will soon receive rehabilitation treatment in a new, purpose-built facility at the Concord Centre of Mental Health, Sydney Local Health District as part of the NSW Government's state-wide investment in mental health.

Located adjacent to Concord Hospital and expanding on its existing forensic mental health services, the new facility will provide low and medium secure mental health beds. A partnership between Health Infrastructure and Sydney Local Health District, the facility will complement the \$341 million redevelopment of Concord Hospital and \$32.4 million multi-storey car park currently under construction.

Forensic mental health is a specialist area of the mental health system that provides assessment, care and treatment to people with mental illness who are, or have been, in contact with the criminal justice system.

It is important that Burudyara provides consumers and staff an environment in which they feel safe so they are able to participate purposefully in therapeutic activities. For this reason, the security of the facility is of utmost importance, and leave or community access will be strictly regulated.

Part of the NSW Government's \$700 million State-wide Mental Health Infrastructure Program, construction of the facility is expected to start in early 2024 and is due for completion by late 2025.

Designed to enhance consumer outcomes

The Concord Forensic Mental Health Unit (CFMHU) once complete will be a secure, modern, and welcoming place for staff, consumers and visitors, where the best quality of care can be provided.

The environment is designed to feel safe and homely, with special domestic features and comforts, while also providing a secure and safe environment for all.

Providing private and social spaces throughout, consumers will have opportunity to interact or retreat to aid with recovery and rehabilitation.



Burudyara means butterfly

The new facility will be named 'Burudyara' (BOO-ruhd-YA-ruh) a local Aboriginal dialect word for butterfly, in line with NSW Health's approach to build a stronger connection between our facilities and the land on which they're built.

Currently in the planning phase, Burudyara will be a low and medium secure facility with therapeutic and recovery-oriented practices and procedures, which focus on acknowledging the unique needs of each individual.

Extensive consultation with staff, carers and people with lived experience of mental health is at the centre of the planning and design process, to ensure these new services deliver appropriate and contemporary models of care.

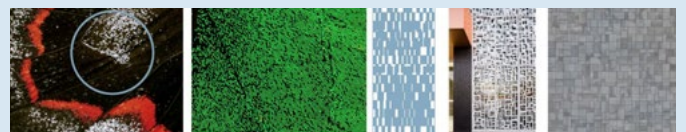
Colour



Form



Density



The design aims to maximise natural light in activity spaces and lounge areas for the increased wellbeing of staff and consumers. The grounds around Burudyara will incorporate therapeutic landscaping elements to positively influence health and recovery. Inside, the new facility will feature warm and soothing colours to create a sense of comfort and calm.



Sustainability at the forefront

Health Infrastructure and Sydney Local Health District are committed to sustainable practices and work with contractors who have embedded environmentally-sustainable procedures.

Dedicated to minimising our ecological and carbon footprint, preference will be given to the selection of materials that are locally manufactured, recyclable and have low embodied energy.

To decrease reliance on heating which consumes a high amount of energy which in turn has a high output, considerations will be made for high thermal and acoustic properties where required.

We are dedicated to minimising our ecological and carbon footprint, and will look to integrate energy-efficient technologies and designs, reduce energy consumption, utilise green materials and promote renewable energy sources.

We look forward to sharing details of all the green initiatives adopted to minimise our impact and maximise our future.

Where to next?

Only after we have conducted our extensive planning and design process will we start building a contemporary, bright and welcoming facility that meets the needs of staff and patients now and for generations to come.

Following the in-depth detailed design phase, the project will move into the delivery stage. This stage will see the main works contractors awarded and construction commence. We look forward to keeping you updated, as we progress through this exciting project.

Pop-in to our pop-up

Health Infrastructure, together with Sydney Local Health District, are hosting community information sessions to showcase the facility's unique design.

Community and staff are invited to pop-in to one of our pop-ups to find out more about the Concord Forensic Mental Health Unit and check out the designs.

Community and staff feedback is important to building facilities fit for the future. Drop in, take a look, and have a chat.

Tuesday 5 September | 5pm to 7pm

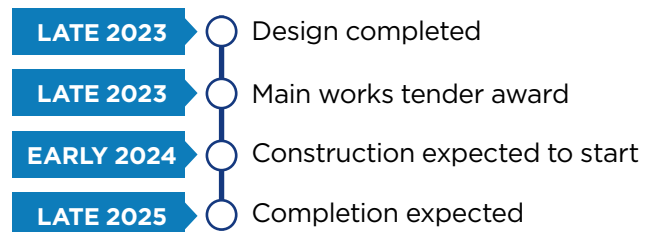
Concord Hospital Foyer, Hospital Road Concord

Thursday 7 September | 5pm to 7pm

Concord Centre for Mental Health, Administration Building, Hospital Road Concord

[Click here to view the invitation](#)

Milestones



Our commitment to engagement

Engaging early with consumers, carers, staff and communities means we gain diverse perspectives that help us to co-design projects that improve consumer outcomes.

The Concord Forensic Mental Health Unit has been co-designed with consumers who have lived experience of mental health facilities, to ensure it meets the needs of the community who will access the service. We continue to work closely with the staff, consumers and the community to share project information, updates and to ask for feedback. For more information please visit the [Concord Hospital website](#) or email SLHD-ConcordRedevelopment@health.nsw.gov.au

FOR MORE INFORMATION:

@ SLHD-ConcordRedevelopment@health.nsw.gov.au

concordredevelopment.health.nsw.gov.au